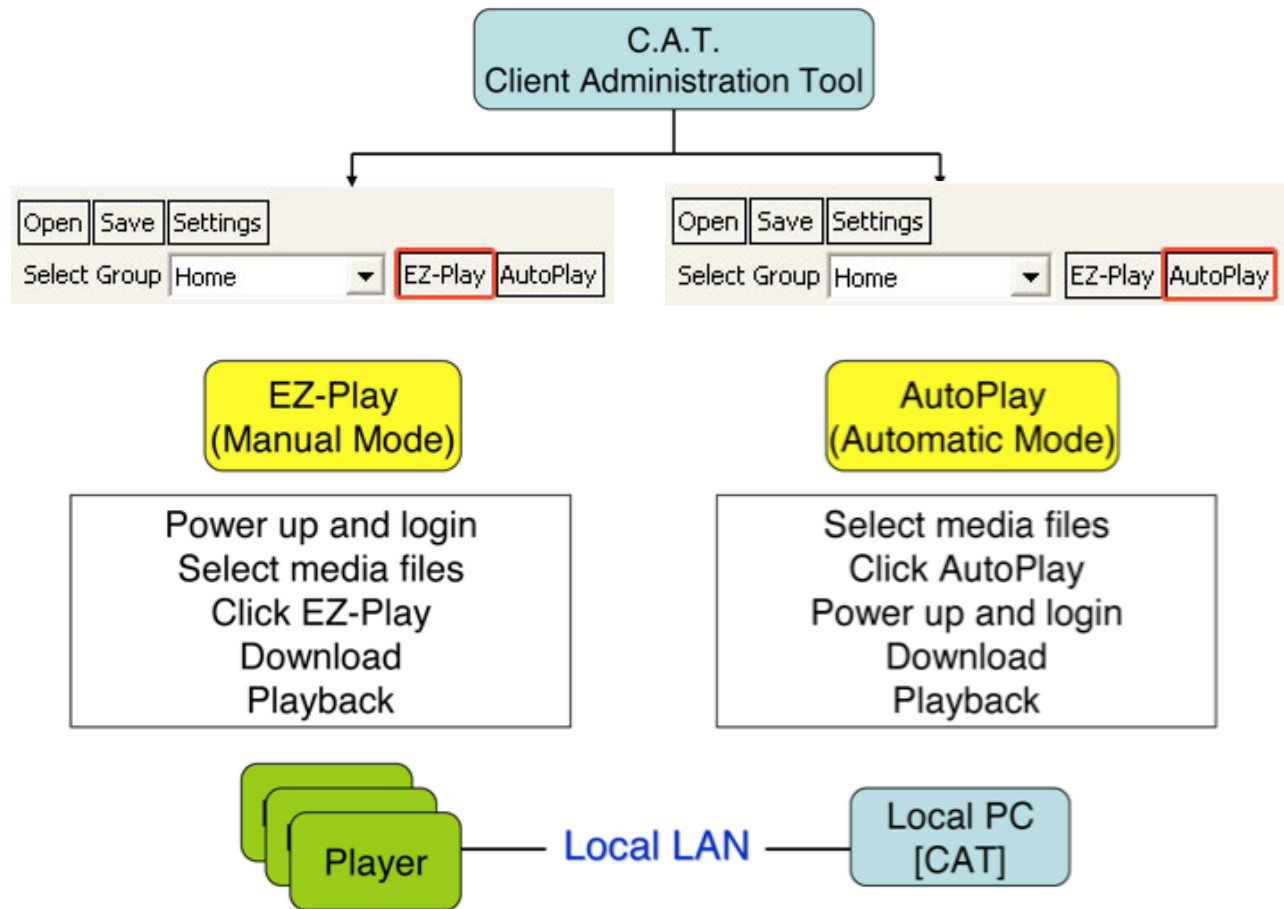
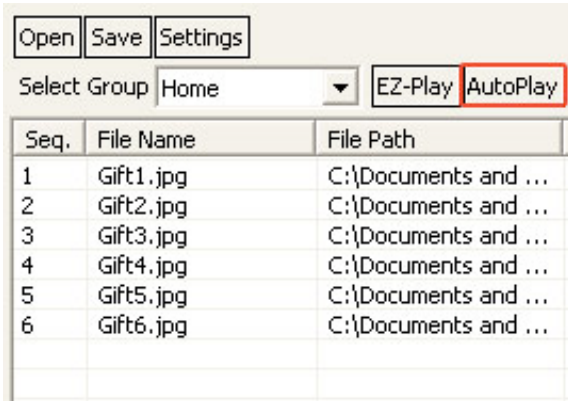


## Download and Playback Method from CAT



## How to Use AutoPlay Mode in CAT

### 1. Direct click from playlist editor

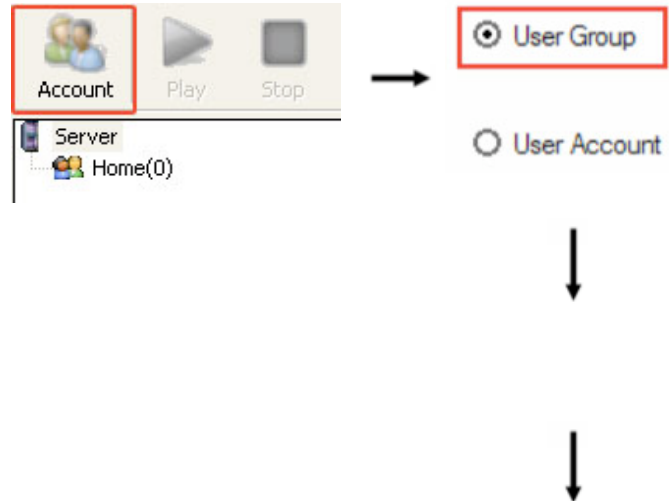


Open Save Settings

Select Group Home EZ-Play **AutoPlay**

Seq.	File Name	File Path
1	Gift1.jpg	C:\Documents and ...
2	Gift2.jpg	C:\Documents and ...
3	Gift3.jpg	C:\Documents and ...
4	Gift4.jpg	C:\Documents and ...
5	Gift5.jpg	C:\Documents and ...
6	Gift6.jpg	C:\Documents and ...

### 2. Select any playlist file by below instructions

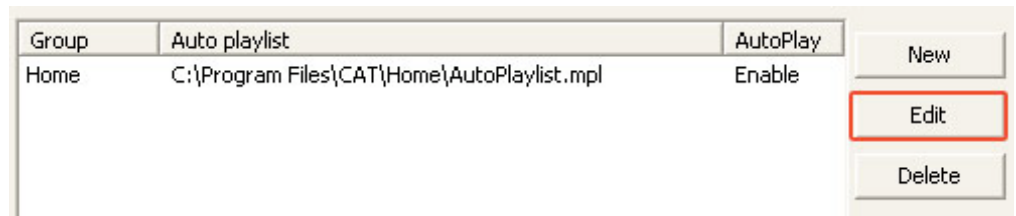


Account Play Stop

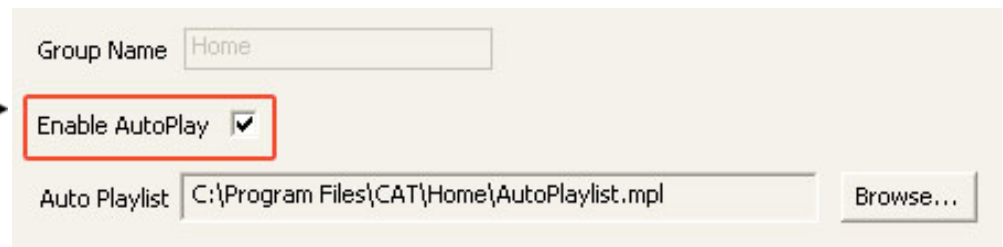
User Group

User Account

AutoPlaylist.mpl is created to be used  
Note: must reboot players to run Autoplay



Group	Auto playlist	AutoPlay	
Home	C:\Program Files\CAT\Home\AutoPlaylist.mpl	Enable	<input type="button" value="New"/> <b><input type="button" value="Edit"/></b> <input type="button" value="Delete"/>



Group Name Home

**Enable AutoPlay**

Auto Playlist C:\Program Files\CAT\Home\AutoPlaylist.mpl

AutoPlay mode can be On/Off on this check box

## How to setup Remote AutoPlay mode (power up, download and play)

### 1. Setup FTP/HTTP content folder

- Create URL path on FTP/HTTP server  
Ex: FTP://signage.com/.../demo
- Setup user name and password to access
- Use any FTP tool to upload media files

### 2. Setup "Remote AutoPlay" mode for players

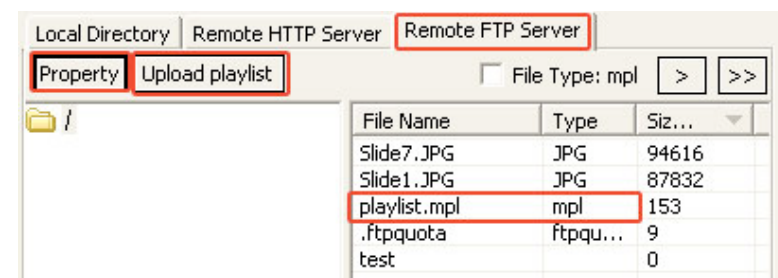
- Use CAT(client setup utility) to setup player's values and http URL signage.com/.../demo/<name>.mpl
- Click "Update Client" or Save as autoconfig.mia file and copy it to CF card
- Plug CF into player and power up to do auto-updating (all values of autoconfig.mia will be stored into player)

### 3. Create playlist "<name>.mpl" and upload to FTP URL

- Go to CAT's remote FTP server -> Property
- Enter FTP path, user name and password, then connect
- Browse FTP and select media files to right window
- Click 'Upload Playlist' and enter "<name>.mpl"
- Later, repeat above steps to upload new "<name>.mpl" (Player is required to reboot to download new playlist)

### 4. Remote AutoPlay Mode

- Power up players
- Payer will automatically download <name>.mpl
- Download contents and playback automatically



# Real example to FTP/HTTP Server for Remote Autoplay

## Setup FTP for playlist file and Upload

**Client Setup Utility**

File

Server IP  
IP or Hostname: 192.168.1.110  
Port: 5021

Client Device Setup  
Account Name: MP-02 Password: mp2

Client IP Setup  
 DHCP  
 Static IP  
IP address: 192 . 168 . 1 . 1  
Subnet mask: 255 . 255 . 255 . 0  
Gateway: 192 . 168 . 1 . 1  
DNS Server: 192 . 168 . 1 . 1

Client Time Setup  
Time zone: GMT-12  
 Daylight saving (+1hr)  
 Restart Time  
 Device On  
 Device Off

Client Video Output  
 S-video  VGA  YPbPr  
TV Type: NTSC LB MODE

Auto Start - Playlist File Location  
 Off  CF card  HTTP URL  
URL: cms.caltronind.com/signage/demo  
URL format example: digitalsignage.com/subfolder/subfolder/filename.mpl

Update Client => Home

**FTP Site Manager**

ProfileName: Caltron FTP **Connect**

Host Address: cms.caltronind.com **Cancel**

Port: 21  Use PASV Mode

Login: caltron  Anonymous

Password: caltron

Add Save Remove

Local Directory Remote HTTP Server Remote FTP Server

Property **Upload playlist**  File Type: mpl > >>

File Name	Type	Size(Byte)
playlist.mpl	mpl	153

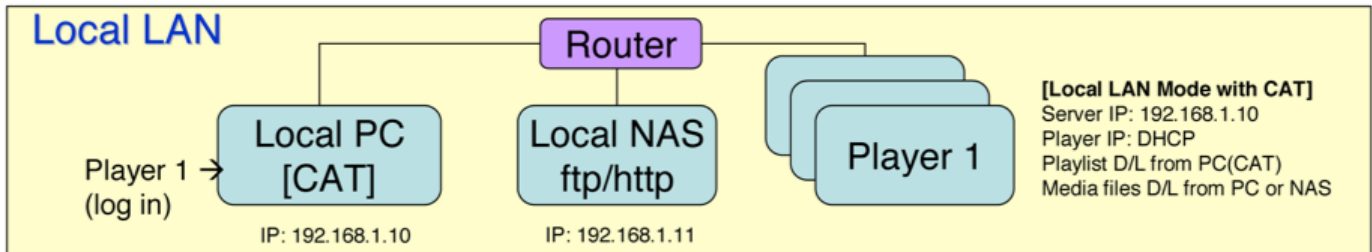
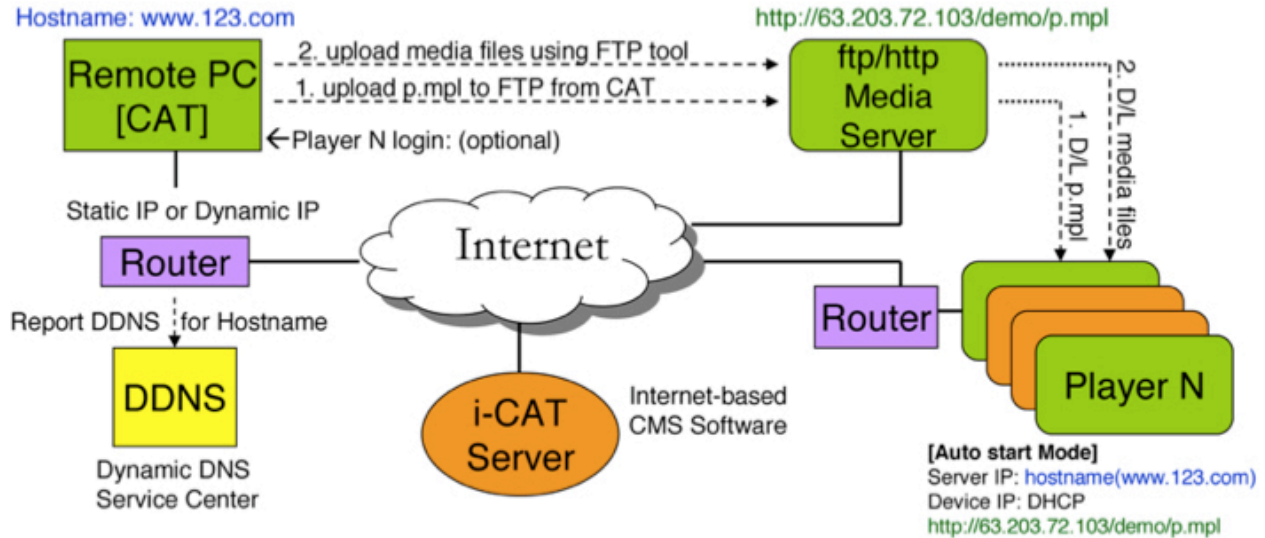
Setup remote URL playlist and store into player

Upload <name>.mpl to FTP

# Player and Server Network System Diagram

- CAT is a tool to create playlist file, client setup file
- CAT is a monitoring server to view all clients' activities
- CAT is a real time command server to send IM, RSS to clients

- Auto Start Mode: Autoplay thru internet
- i-CAT CMS: manage players thru internet
- CAT Mode: local LAN direct control



# Player Wired and Wireless Connection Diagram

